

# Certificate of Analysis

**Adria**  
Adria Science  
Slovenia  
[info@adriascience.com](mailto:info@adriascience.com)

**Liquilabs s.r.o.**  
Inovační 122  
252 41 Zlatníky-Hodkovice  
Czechia  
[www.liquilabs.cz](http://www.liquilabs.cz)



[Verify Results Online](#)

## Sample Identification

**Sample Name** KLOW 50/10/10/10 mg  
**Batch Number** 20260922  
**Date Published** 2026-05-28 13:52

## Results for LYO-0185

Peptides	Result	Unit	Uncertainty	Acceptable Range
BPC-157 Assay Peptide Screening 0.1% TFA	11.10	mg	[± 0.06]	
GHK-Cu Assay Peptide Screening 0.1% TFA	58.8	mg	[± 0.3]	
KPV Assay Peptide Screening 0.1% TFA	9.48	mg	[± 0.05]	
BPC-157 Identification by RT Peptide Screening 0.1% TFA	0.994		[± 0.005]	
GHK-Cu Identification by RT Peptide Screening 0.1% TFA	0.998		[± 0.005]	
KPV Identification by RT Peptide Screening 0.1% TFA	0.996		[± 0.005]	
Thymosin Beta 4 (TB-500) Assay Peptide Screening 0.1% TFA	12.89	mg	[± 0.06]	
Thymosin Beta 4 (TB-500) Identification by RT Peptide Screening 0.1% TFA	0.994		[± 0.005]	

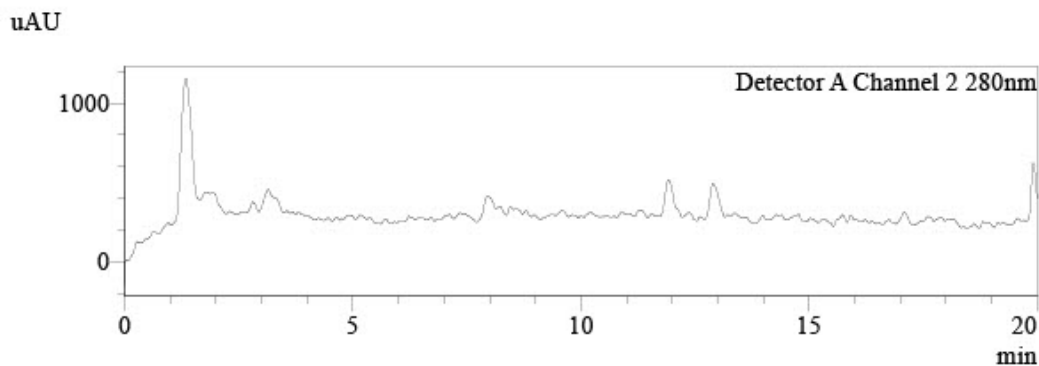
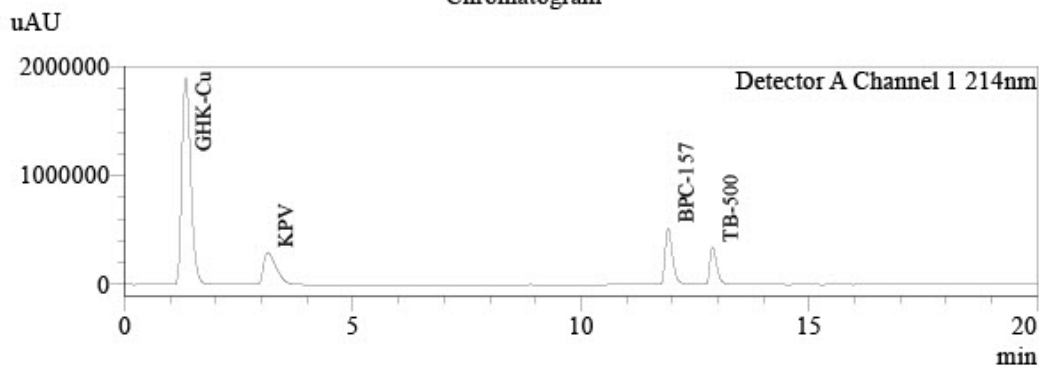
# Analysis Report



## Sample Information

Injection Volume : 0,5  
Data File : LYO-0185\_003.lcd  
Method File : Peptide screening\_202602\_Polar\_Blend A.lcm  
Date Acquired : 27.05.2026 16:23:59

## Chromatogram



## Peak Table

Detector A Channel 1 214nm						
Peak#	Name	Ret. Time	Conc.	Unit	Area%	
1	GHK-Cu	1,338	58,840	mg/L	62,900	
2	KPV	3,137	9,481	mg/L	13,876	
3		11,578	0,000		0,114	
4	BPC-157	11,912	11,097	mg/L	14,330	
5	TB-500	12,885	12,889	mg/L	8,780	
Total						100,000

## Peak Table

Detector A Channel 2 280nm				
Peak#	Name	Ret. Time	Conc.	Unit
Total				

## Responsibles



**Mr. Ján Galbavý**  
*CEO*

Analysis results relate only to the samples tested.

This document shall not be reproduced except in full, without the written approval of Liquilabs s.r.o.